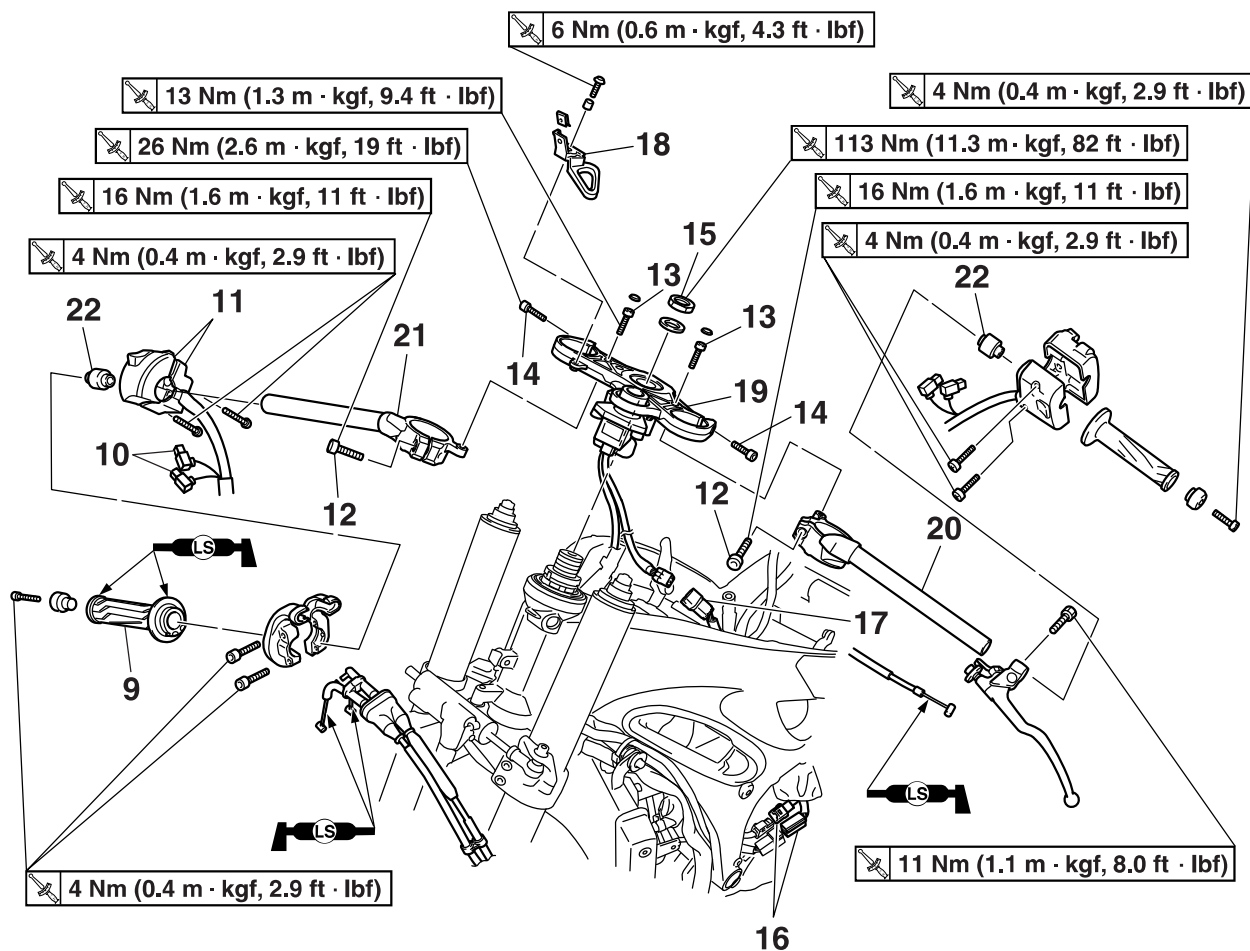


Removing the handlebars



Order	Job/Parts to remove	Q'ty	Remarks
9	Throttle grip	1	
10	Brake switch connector	2	
11	Right handlebar switch	1	
12	Handlebar pinch bolt	2	Loosen.
13	Handlebar bolt	2	Loosen.
14	Upper bracket pinch bolt	2	Loosen.
15	Steering stem nut	1	
16	Main switch coupler	2	Disconnect.
17	Immobilizer unit coupler	1	Disconnect.
18	Clutch cable guide	1	
19	Upper bracket	1	
20	Left handlebar	1	
21	Right handlebar	1	
22	Grip end damper	2	
			For installation, reverse the removal procedure.